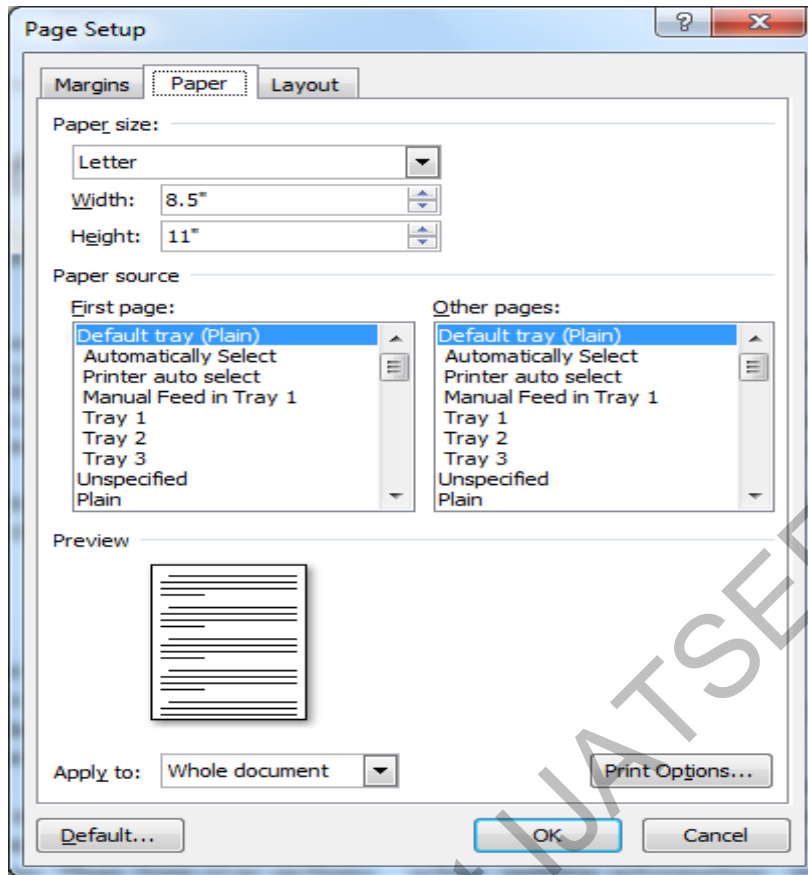


1. Before Start Formatting the paper, set the page layout for Whole document. Set the paper type for the whole document.



2. Set the Paper **Margins** for the whole document.

3. Set **Header/ Footer** for the whole document.

4. Then go to your Research Paper and then select the Header Area Text to Re-format it.

How To Set Font Style

Always Use Format Painter to Set the Font Style.

Select the text in IJATSER format template document.

Click Format Painter. (The cursor will change to brush type.)

Then goto Your document select the text you want to format.

Manually Use can set the Font Style as stated below:

Title - Calibri / 18

Author Names- Calibri / 9

Abstract/Keywords/Index Terms Title - Calibri / 9 / Bold

Abstract/Keyword/Index Terms Contents - Calibri / 9

Main Paper Content - Calibri / 9

How To Set Two Column Format

Try to make your paper in IJATSER paper format

Before submitting paper for final publication

1. Do not capitalize all the letters of Paper Title / Author names.
2. Below title only author names are allowed, **do not** subscript numbers, email or any other detail.
3. Author details can be provided left side bottom of first page as specified in the format. Or you can provide details about authors in the last page.
4. Font style/size of the paper should be according to IJATSER format.

5. Page Margins, paper type settings should be according to IJATSER format.

Copyright IJATSER